



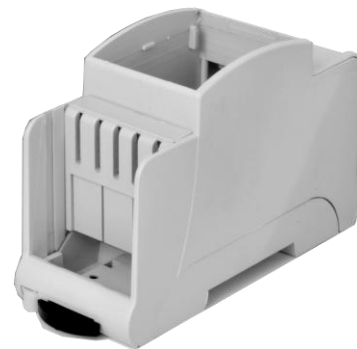
2HDL



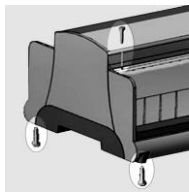
2HDLAR



2HDSC

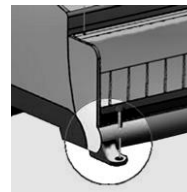


2HDSARC



La chiusura fra base e coperchio è a scatto, con la possibilità di bloccaggio meccanico tramite viti. I coprimorsetti, con montaggio ad incastro, possono essere bloccati tramite viti.

*Base and cover are snap-on, and can be locked by means of self-tapping screws. Terminal covers are snap-on, and can be locked with self-tapping screws.*



Fino a quattro piedi esterni per il fissaggio a parete possono essere montati sotto la base. In tal modo la custodia resta bloccata e montabile su qualsiasi parete.

*Up to four external wall-mounting feet can be mounted under the base. In this way the enclosure remains locked, and can be mounted on any wall*

## Accessori - Accessories



4HDAL



4HDCL



4HDSC



4HDSARC